



#### BOARD OF DIRECTORS

Brian Ballard  
Terry Carstensen  
Terry Clark  
Harvey Dale  
Doug Fenn  
Melinda Hadzor  
Orval Hansen  
Donna-Marie Hayes  
Elizabeth Hendrix  
Michael Humphreys  
Leon Jones  
Amy Klingler  
Debra LaMorte  
Drew Lawler  
Linda Lawler  
Pat Lee  
Jenny MacNichol  
John McComish  
Jim Mitchell  
Helen Pardoe  
Ted Pardoe  
Susan Perin  
John Seiler  
Larry Stone  
Elizabeth Tierney  
Wes Wills  
Patricia Young

#### OFFICERS

Paul Hill, President  
Hans Carstensen, V.P. Policy and Strategic  
Arlen Crouch, V.P. Institutional/Partners  
Matt Engel, Treasurer  
Wayne Hughes, V.P. Lands Programs  
Carter MacNichol, V.P. Grants Program  
Reuben Perin, Jr.  
V.P. Member Development  
Sue Orb, Secretary  
Keith Reese, V.P. Administration

#### STAFF

Gary O'Malley, Executive Director  
Kelly Conde, Volunteer/Membership



## SPONSOR A VOLUNTEER PROJECT!

Do you want to help make the Sawtooth NRA even better, but can't find the time? Are you looking to give your loved one a meaningful gift? Sponsor one of our Austin Kraal Memorial Volunteer projects. All volunteer projects serve to enhance the Sawtooth NRA while exposing youth and adults alike to its beauty. The named sponsor will receive pictures of the completed project and the great appreciation of the Sawtooth Society and the project participants. Make a difference in the Sawtooth National Recreation Area. Learn more about sponsoring a project by contacting our Volunteer/Membership Coordinator, Kelly Conde, at [kelly@sawtoothsociety.org](mailto:kelly@sawtoothsociety.org).

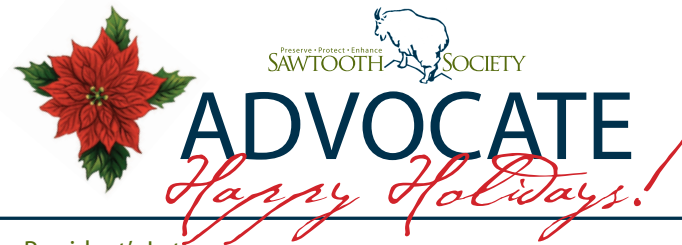


## "Like" the Sawtooth Society on Facebook

Stay up-to-date on the events and issues of the Sawtooth NRA and the Sawtooth Society. Follow the Sawtooth Society blog at <http://blog.sawtoothsociety.org/> and follow us on Facebook at <https://www.facebook.com/SawtoothSociety>



**CHECK YOUR PLATES!**  
If it isn't a goat, it isn't giving to fund the important ongoing work of the Sawtooth Society. When you "Get a Goat", you "Give a Gift"!



December 2014

## The President's Letter Looking Back to Better See Ahead

How does a well-run organization maintain its success? One secret is not only continuously looking ahead and planning the future, but also periodically looking back on what's occurred. Where we've come from, challenges we've faced, and things we've accomplished are key to understanding today's circumstances and providing sound future goals, strategies and actions.

After more than a decade of strong leadership under Bethine Church, Bob Hayes, and others, focused primarily on helping the Forest Service secure important conservation easements, in early 2009 the Society's current leadership team began coalescing. Gary came on board as Executive Director, I became President elect, other new officers took on their roles as we moved forward, and more recently Kelly Conde joined the team.

Significant changes followed, as our Board adopted a new, broader vision of the Society's future. Board membership grew by 50%, with greater diversity, expanded expertise, wider resource support and a broadened network of contacts and influence. Our annual budget increased from roughly \$200,000 to \$300,000, cash reserves grew from one or two months' normal operating expenses to six months' worth, and revenue sources diversified to include expanded Soiree income, substantial grants, and proceeds from selected sales items.

New partnerships also developed in conjunction with the Soiree, the Volunteer Program and other activities. This growth in turn nurtured significant expansion of Society programs that now include not only the large and growing Austin Kraal Memorial Volunteer Program but also increased work on key issues like enhancing administration of the Forest Service Private Lands Program and reducing the risk of catastrophic wildfires. It also has enabled us to adopt a vigorous role on key policy issues like working to enact the proposed CIEDRA legislation and debating the recent National Monument proposal. Coupled with this have been broader outreach and increased visibility through educational forums on conservation and issues affecting the Sawtooth NRA; member open houses; receptions at gallery walks, film premiers and book readings; and special events like barbeques and other celebrations for volunteer program participants; plus a regular flow of media stories, Op-ed pieces and news releases.

As a result, today the Society has a stronger foundation, broader recognition and greater impact in fulfilling our mission of preserving, protecting and enhancing the Sawtooth NRA. Officials in the Obama Administration, Congress, the Forest Service and elsewhere are repeatedly recognizing the Society as a leading advocate on policies and issues affecting the Sawtooth NRA and are seeking our views on a variety of important topics. Credit for these accomplishments goes to many folks – individual and institutional members and friends; our strong cadre of volunteers; and most of all our dedicated staff, officers and Board.

But challenges always remain. The current budget-cutting environment in Congress means greater reliance on private sector support like our Volunteer Program to properly maintain the best qualities of the area we all treasure. Turnover of Forest Service staff, particularly at more senior levels like Area Ranger, requires a continuing commitment to building the kind of relationships that foster a strong, effective partnerships with the Society and a sharing of common goals. And new proposals to modify the status and management of the Sawtooth NRA inevitably will arise, some modest, some major (like the proposed National Monument), but all requiring careful analysis and response.

The engine that drives the Society's own growth and success must be fueled with increasing human and financial resources for these important programs. This is no small matter; but as we observe and build on what we've done before we also strengthen our ability to meet and overcome whatever challenges lie ahead.

**In this Holiday Season, let us therefore celebrate both past achievements and future successes!**

Paul D. Hill, President

## The Austin Kraal Memorial Volunteer Program Join in the Fun!



The Sawtooth Society's Austin Kraal Memorial Volunteer Program started its second year with a few staple guns and some stinky white patches. From that first project in May, where 15 volunteers spent the day stapling pheromone patches to Douglas-firs to prevent bark beetle infestation, the Society dedicated all but a few moments of the summer to caring for and enjoying the beautiful Sawtooth National Recreation Area. Projects ranged from clearing roads and trails of downed logs with crosscut saws to clipping fencing for antelope passage. Weed pulling and a variety of trail maintenance and cleanup efforts were completed by many volunteers of all ages.

The summer volunteer programs were put in motion with great success especially due to the work and expertise of Kelly Conde, the Sawtooth Society's Volunteer and Membership Coordinator. "The morning of the first project started with several inches of snow," said Conde. "But, we still stapled nearly 3,000 pheromone patches to trees to prevent bark beetle infestation. It was a good start to the a very active year."

As June kicked summer into high gear, groups from all over Idaho and including Stanley participated in a plethora of

projects. Kids from the Boys and Girls Club of Magic Valley spent a weekend raising mesh and barbed wire fence in the Tuck-a-Away Pastures to allow for antelope passage.

The guides from the four Stanley rafting companies — The River Company, Sawtooth Adventure Company, White Otter Outdoor Adventures and White Cloud Rafting Adventures — gave back by floating the Salmon River and stopping at hard to reach areas to pick up trash. Another group of youth, from Cherry Gulch, a boarding school for teenage boys, came from Emmett to clean over-used campsites and tear down old rotting fences from a meadow adjacent to Frenchman Creek

In late August, board members and members of the Sawtooth Society gathered in the sprinkling rain to build a fence along Pole Creek to keep vehicles out of the creek. "With the completion of this project, Pole Creek now has the respite needed to heal," Conde said. Along with the large groups, several Stanley residents participated in projects throughout the summer including tearing down a useless barbed wire fence near Decker Flats, removing small trees from meadows to aid fire suppression

and wildlife enhancement, pulling weeds along the Salmon River and regularly maintaining various trails throughout the Sawtooth NRA.

"We worked the Boundary Creek Trail, Williams Creek, South side of Redfish Lake from the inlet to the ridge, Alice Lake trail and Hellroaring," said Conde. "Three days were dedicated to the Hellroaring trail by Paul Holle and the Sawtooth Brewery crew."

According to Conde, it was the large range of volunteers that made the summer such a success and so enjoyable. "I had people who have lived in Stanley for years and people who had never been to Stanley before helping out," said Conde. "Everyone was out there for the same reason—they all love the Sawtooth National Recreation Area and are willing to work to keep it the incredible place it is today."

To learn about the Sawtooth Society and it's membership visit <http://www.sawtoothsociety.org>. For more details and information about the volunteer program or to volunteer for a future project, contact Kelly Conde at [kelly@sawtoothsociety.org](mailto:kelly@sawtoothsociety.org).



Kate Lopez staples three patches to the large Douglas-fir. Photo by Kelly Conde

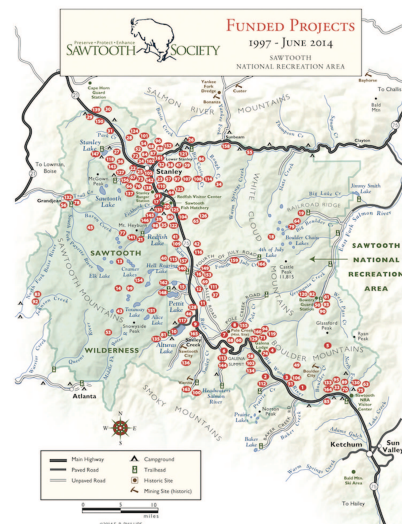


The Boys and Girls Club of Magic Valley show how volunteering is done. Photo by Kelly Conde



Sawtooth Society board and members work together to build a beautiful log-worm fence to protect Pole Creek. Photo by Kelly Conde

## SAWTOOTH SOCIETY GRANTS MAKING A DIFFERENCE!



Drive around Central Idaho and you may notice what seems to be a growing affinity for goats. License plates with a big goat to one side are more and more prevalent throughout the area. It turns out the affinity is not necessarily for goats but for the Sawtooth National Recreation Area.

Purchasing a Goat license plate gives money directly to the betterment of the Sawtooth NRA and the Sawtooth Society is responsible for managing the Goat License Plate fund. Four times per year, the Society's Grants Team reviews grant requests and allocates money to recreation-based projects throughout the area.

One regular recipient of the Goat License Plate Grant is the Sawtooth Avalanche Center.

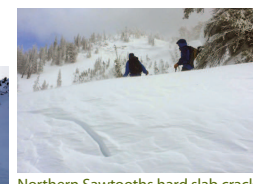
"Without partners like the Sawtooth Society, the Avalanche Center's flagship product — the daily avalanche advisories — would not be available 7 days a week," said Sawtooth Avalanche Center Acting Director Scott Savage.

Backcountry skiers and snowmobilers rely on these advisories to keep them safe while recreating in the steep backcountry of the

Sawtooth NRA. Through the Goat Grant, the Sawtooth Society sponsors one advisory day each week.



Pole Creek avalanche. Photo courtesy of SAC.



Northern Sawtooths hard slab cracks. Photo courtesy of SAC.

The Sawtooth Avalanche Center is just one of many groups who benefit from the Goat License Plate Grant. In the past year, the Sawtooth Society has funded projects for the U.S. Forest Service, Idaho Trails Association, Sawtooth Search and Rescue, the Sawtooth City Association, and the Sawtooth Interpretive and Historical Society or SIHA.

Terry Clark, Executive Director of SIHA, said that the Sawtooth Society has been very helpful throughout the years in providing funds to get various SIHA projects off the ground. SIHA's latest project is a two-part restoration of the Stanley Museum. With the Goat License Plate Grant, along with funding from the Idaho Heritage Trust and Central Idaho Resource Advisory Committee, SIHA was able to complete the first phase of the project, which included replacing part of the building's foundation and siding. "The place looks great," Clark said.

Clark recently received word that the work done to the Stanley Museum earned SIHA the Sister Alfreda Elsensohn Museum Award. Not only is this award of the highest honor for an Idaho Museum, but it also comes with a \$10,000 reward.

Clark said that without the financial assistance of programs like the Sawtooth Society's Goat License Plate grant, the museum would have gone unmaintained. "The Society's grants are very, very helpful to our operation," Clark said.



The Stanley Museum. Photo courtesy of SIHA.

The Sawtooth Society reviews grant requests quarterly. To apply for a Goat License Plate grant, visit our website: [www.sawtooth-society.org/issues](http://www.sawtooth-society.org/issues).



## Weighing in on: The National Monument Issue

After direct engagement in the discussion regarding the proposal to create a National Monument in Central Idaho for over a year, the Sawtooth Society has concluded it must oppose any overlap of a National Monument on the Sawtooth National Recreation Area. At the same time, the Society reiterates that it has been a long-time supporter, and continues to support, Wilderness designation for the Boulder-White Cloud peaks in the eastern part of Central Idaho's Sawtooth National Recreation Area (NRA) as outlined in the pending Central Idaho Economic Development and Recreation Act (CIEDRA).

"The Act creating the Sawtooth NRA was unanimously endorsed by the Idaho Congressional delegation, had broad support in Congress and across Idaho, and it has protected the Sawtooth NRA for well over 40 years," said Sawtooth Society President Paul Hill. "We urge a similar patient approach in the present case." Hill notes that while the CIEDRA legislation has been pending for a number of years, it took several decades to ultimately develop and enact the legislation that created and permanently protected the Sawtooth NRA.

"We don't believe this is the time to abandon efforts to enact the CIEDRA legislation, which would provide predictable and truly effective additional protection for the Boulder-White Clouds," Hill said. "It's simply unwise to trade this time-tested approach for an unpredictable bureaucratic process with an unknown outcome, such as a Presidential Proclamation of a National Monument — a process that would not add any meaningful new protection as compared to the protection and processes already in place within the Sawtooth NRA. Moreover, creation of a National Monument would inevitably generate a host of new problems that enactment of Wilderness legislation would avoid."

"We just cannot see any real benefits it would yield, or any issues it would address that cannot be better addressed through modifying existing management and travel plans for the area," Hill said. "In addition to working for Congressional Wilderness

designation, the Society stands ready to collaboratively pursue any changes needed in existing plans to address any problems or threats in the Boulder-White Clouds, now or in the future."

Hill added the Society certainly supports more robust funding and enforcement for the entire Sawtooth NRA. For years it has been a strong advocate for such funding and will continue to actively pursue it.

"The proposed 280,000-acre overlap on the already protected Sawtooth NRA would require creation of a new multi-agency management plan using a complicated, multi-year planning process with an unknown outcome," said Sawtooth Society Executive Director Gary O'Malley. "For at least several years, it would divert vital Forest Service resources from National Recreation Area management, delay critical National Recreation Area decisions while awaiting a final plan, strain limited resources in the Boulder-White Clouds, divert scarce resources from important neighboring areas and likely generate confusion, conflict and lawsuits. What real purpose would that serve?"

The Society sees no additional benefit from a National Monument proclamation on existing Sawtooth NRA lands. For example, new mining claims are already prohibited in the NRA and the relatively few remaining claims are restricted to the full extent law allows. A National Monument declaration would not change the status-quo."

In addition, the proposed National Monument would divide management of three major river fisheries, including the Upper Salmon, Big Lost and Big Wood Rivers, into separate regimes for portions within and without the proposed National Monument. Were a National Monument proclaimed, recreational traffic would likely increase on the already strained Boulder-White Clouds infrastructure and emergency services and on a very fragile environment.

"Yet, a National Monument proclamation would fail to make any provision for additional funding to address these challenges," O'Malley said.

Because the Society's mission focuses exclusively on the Sawtooth NRA, the Society does not oppose a National Monument in Central Idaho outside the Sawtooth NRA, though neither is it supporting it.

This photo, courtesy of Tod Hamachek, is looking at the White Clouds.



This photo, courtesy of James Bourret, Mountain Images Gallery, captures the special beauty of the Boulder-White Clouds Area.

"The Sawtooth National Recreation Area is a major success story with a proven history of sound management," O'Malley said. "This tremendous legacy should not be compromised or undermined by a complicated and untested management plan that will emerge only years after monument designation occurs. Since the Sawtooth NRA portion of the proposal is already permanently protected, we can see no advantage, only downside."

Congressman Mike Simpson has recently announced he plans to reintroduce and strongly push legislation early next year to Congressionally designate some of the area as Wilderness. A step the Society whole-heartedly supports.

Simpson's decision rests on several factors including expected changes in leadership of the House Resources Committee and acknowledgement by Obama Administration officials that Congressional action, rather than a Presidentially proclaimed National Monument, is the best way to provide additional

protection. The threat of problems arising from possible NM creation, particularly one overlapping the BWC, should legislation fail, also may help its passage. The Society believes the cumulative impact of these and other changes significantly increase chances for Congressional passage.

The advantages of Congressional Wilderness designation versus a National Monument are many. It provides a level of environmental protection a National Monument designation cannot achieve. It follows a well-known process with a predictable outcome in contrast to the uncertain process, outcome and timetable that a National Monument route involves. It avoids years of diversion of management resources, delays of critical decisions, confusion and possible litigation for the Sawtooth NRA involved in developing the multi-agency, multi-year management plan required for a BWC National Monument. And, in CIEDRA's case, it incorporates over a decade of important input from Idaho stakeholders via numerous public hearings and meetings that Simpson conscientiously held in developing his proposal.

Simpson has asked the Administration for time to pursue enactment of legislation before they make any final decision on creation of a National Monument. This presents a unique opportunity in 2015 to "get it right" on meaningful further Boulder White Clouds protection. We urge those promoting a National Monument to publicly recognize that supporting Wilderness legislation is consistent with providing the best permanent protection for the area.

As a long-time supporter of Wilderness legislation for the area, steadfastly committed to this approach even when others lost hope and shifted to the problematic National Monument route, the Sawtooth Society hopes everyone who values this area's unique natural qualities will unite to do everything possible to capitalize on a golden opportunity and support these legislative efforts!

For additional information about the issue visit the Sawtooth Society at [www.sawtoothsociety.org](http://www.sawtoothsociety.org) or email [gary@sawtoothsociety.org](mailto:gary@sawtoothsociety.org).



This photo, courtesy of Harvey Dale, is of Idaho's state bird, a Mountain Bluebird.

