



SAWTOOTH SOCIETY

PRESERVE - PROTECT - ENHANCE



Who we are

The Sawtooth Society is a nonpartisan organization founded in 1997 by Idaho Politicians, Advocates, and Residents that shared a collective love of the Sawtooth National Recreation Area and the unique landscapes, plant life, and animals that call it home.

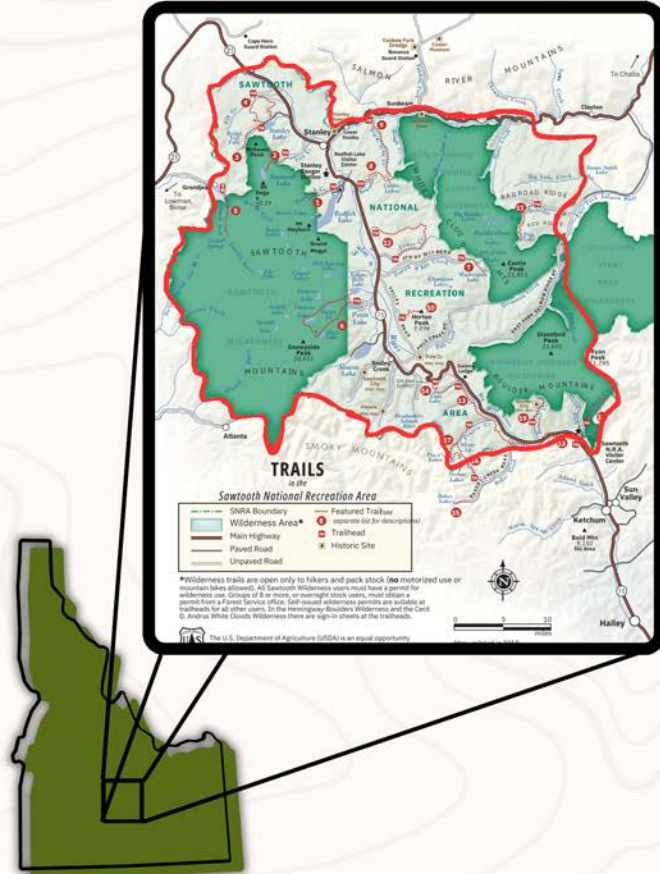
We devote our time, efforts, and funds to Trail Stewardship, Wildfire Mitigation, Recreational Improvements, and Advocacy - all with the focus of Preserving, Protecting, and Enhancing the SNRA!



What is the Sawtooth NRA?

The Sawtooth National Recreational Area (Sawtooth NRA) is a majestic **756,000-acre** expanse in Central Idaho that encompasses the Sawtooth, Cecil D Andrus-White Clouds, and Hemmingway-Boulder Wilderness areas.

The SNRA boasts over **900 miles of trails, 40 peaks rising over 10,000 feet, and more than 300 alpine lakes** that add to the area's spectacular scenery and vistas. The city of Stanley sits squarely within the boundaries of the Sawtooth NRA, and the Wood River Valley, which includes Sun Valley, is within easy driving distance from the south.



Threat of Mine Activity Near Castle Peak Deplored by Idahoan

Another Idaho conservationist organization Friday expressed concern over possible methods for mining operations at the base of Castle Peak in the White Cloud Mountains near Boise.

"Castle Peak is one of the most beautiful mountain peaks in Idaho," said Ernest Day, Boise, regional director of the National Wildlife Federation.

"While they are at present doing all possible to preserve the unspoiled nature of the out-lying White Cloud area, American Smelting and Refining Co. is a potential danger to the area."

Another Idaho conservationist organization Friday expressed concern over possible methods for mining operations at the base of Castle Peak in the White Cloud Mountains near Boise.

"Castle Peak is one of the most beautiful mountain peaks in Idaho," said Ernest Day, Boise, regional director of the National Wildlife Federation.

"While they are at present doing all possible to preserve the unspoiled nature of the out-lying White Cloud area, American Smelting and Refining Co. is a potential danger to the area."

THE IDAHO STATESMAN
BUSINESS
AND
INDUSTRY

U.S. Adds 75,000 Tons To North Sugar Quota

WASHINGTON (AP) — An extra 75,000 tons of raw sugar will be added to the United States quota for 1968-69, the Agriculture Department announced Friday.

The sugar will be shipped to the United States from the cane fields of the Philippines, which may be important, officials said.

Imports south of Cape Hatteras and in the Gulf area have large quantities of molasses produced raw sugar from next year's quota available, the department said.

Friday's action was taken at the base of the scenic peaks since they to determine the extent of disturbance do been announced.

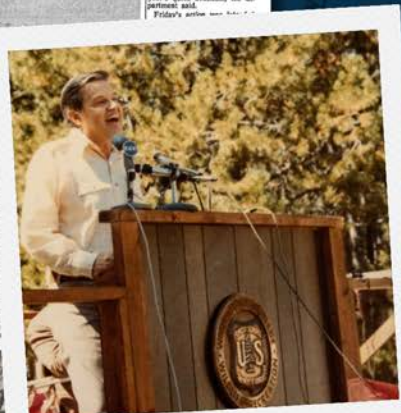


CASTLE PEAK, the 11,400-foot summit situated on the White Cloud range in the East Fork of the Salmon River, is the scene of last drilling by American Smelting and Refining Co. for possible commercial grade molybdenite deposits. The drilling has been conducted since 1965 and has been announced, but not announced, before.



THE SCENE — Showing a fair-sized growth of forest, the Frank Church reserves a high peak near Castle Peak in the heart of the White Clouds. Church privately said that he had in the area to give technical information about the environment and plan for mining operations. He said that the site, he had done research in the area and that the mountain region should be included within the proposed Sawtooth National Recreation Area.

Church Says 'Mining Fever' Hurts Chances for Park in White Clouds



Frank Church at the SNRA Dedication Ceremony - 1972

The History of the Sawtooth NRA

With a growing threat of increased mining in the White Cloud Mountains, Senator Frank Church continued a decades long campaign to protect the diverse landscape of the central Idaho mountains from development and habitat destruction.

In 1972, Congress passed Public Law 92-400, finally setting aside the Sawtooth National Recreation Area, with a primary focus on:

“the preservation and protection of the natural, scenic, historic, pastoral, and fish and wildlife values, and to provide for the enhancement of...recreational values”.

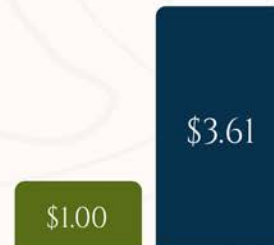
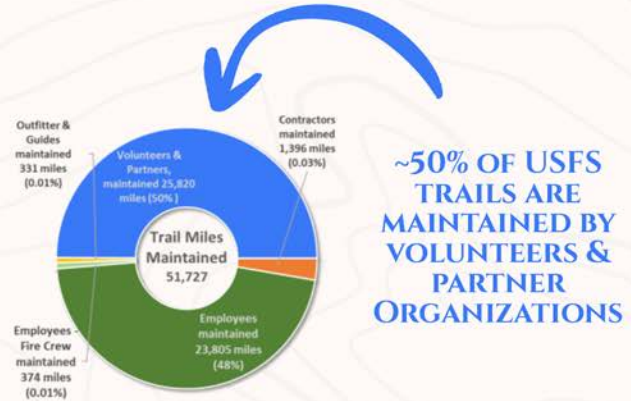
-PL 92-400

Why we need Organizations like The Sawtooth Society

In 2023, The USFS reported that it manages over 51,000 miles of maintained motorized and non-motorized trails on public land. Of that, **25,820 miles were maintained by Volunteers and Partner organizations.**

Without these organizations and volunteers, half of the trails in the USA would degrade and disappear

Nonprofits also have access to **local, state, regional, and national funding sources**, enabling a **broader range of projects to be completed**. These federal & foundation grants, individual contributions, and program revenues amplify the financial foundation for high-impact infrastructure improvements that would otherwise be cost-prohibitive to accomplish.



For every **\$1 in State Funds**, Nonprofits seek out and provide **\$3.61 in Alternative Funding sources** for projects



What we do

Trail Maintenance

Every year, our skilled Trail Crew works to clear early season roadways with chainsaws and vehicles, prioritizing major thoroughfares and recreational access points. Throughout the season, they focus on wilderness trail clearing and maintenance with manual tools, such as the famous 2-person cross-cut saw and iconic pulaskis.

+400 Miles
of Trails and
Roadways cleared

+1,000
Trees Cleared

+10,700ft
of trail Brushing

+700
Volunteer
Hours

What we do

Sawtooth Valley Wildland Fire Collaborative

Created by community-driven need, the Fire Collaborative is the only project in our region working collectively to reduce wildland fire risks in the Sawtooth Valley. This is done through emergency communications during major incidents, hosting community education forums, and working closely with The USFS for hazardous fuels reduction.



What we do

Sawtooth NRA License Plate Fund

Over the past 25 years, the Sawtooth Society has successfully recommended over \$1.2 million in grants to other organizations working to Preserve, Protect, and Enhance the SNRA.

These funds come directly from the iconic SNRA “Goat Plates” and 100% of the proceeds are given directly to enhancement projects done by other organizations in the SNRA.

**OVER \$1.2 MILLION IN
GRANTS SINCE 2001**



What we do

Collaboratives & Salmon Recovery

As active participants in the Sawtooth Coalition and Save our Wild Salmon (SoS) initiative, we amplify the SNRA's voice in local, regional, and national conservation efforts to protect the land and animals that call the SNRA home.

**PARTICIPANTS IN 10
DIFFERENT REGIONAL
COLLABORATIVES**





MIKE HOOVER - EXECUTIVE DIRECTOR

Mike Hoover joined the Sawtooth Society as Director of Operations in 2024, bringing a background in nonprofit leadership, event management, and a deep passion for community and the outdoors. In 2026, Mike stepped into the Executive Director role, leading the organization into the next chapter of conservation through community collaboration and leadership. Originally from Michigan, he now calls Idaho home and loves exploring the Sawtooths by bike, ski, or on the trail.



MICHAEL COINER - OPERATIONS COORDINATOR

Michael became part of the Sawtooth Society team in the spring of 2026 as Operations Coordinator. Having been born and raised in Ketchum, Michael has a strong love for her community and the gorgeous scenery that surrounds it.



MELINDA MARKIN - SVWFC PROJECT COORDNATOR

With an extensive background in conservation, Melinda brings a decade of expertise in fire ecology and project management. She is leading the growth of the Sawtooth Valley Wildland Fire Collaborative through workshops, community engagement, and strategic partnerships.

BOARD OF DIRECTORS



Whether working in the field, coordinating efforts behind the scenes, planting trees, or helping fundraise, our Board of Directors encapsulates what it means to be true Champions of the of the SNRA!

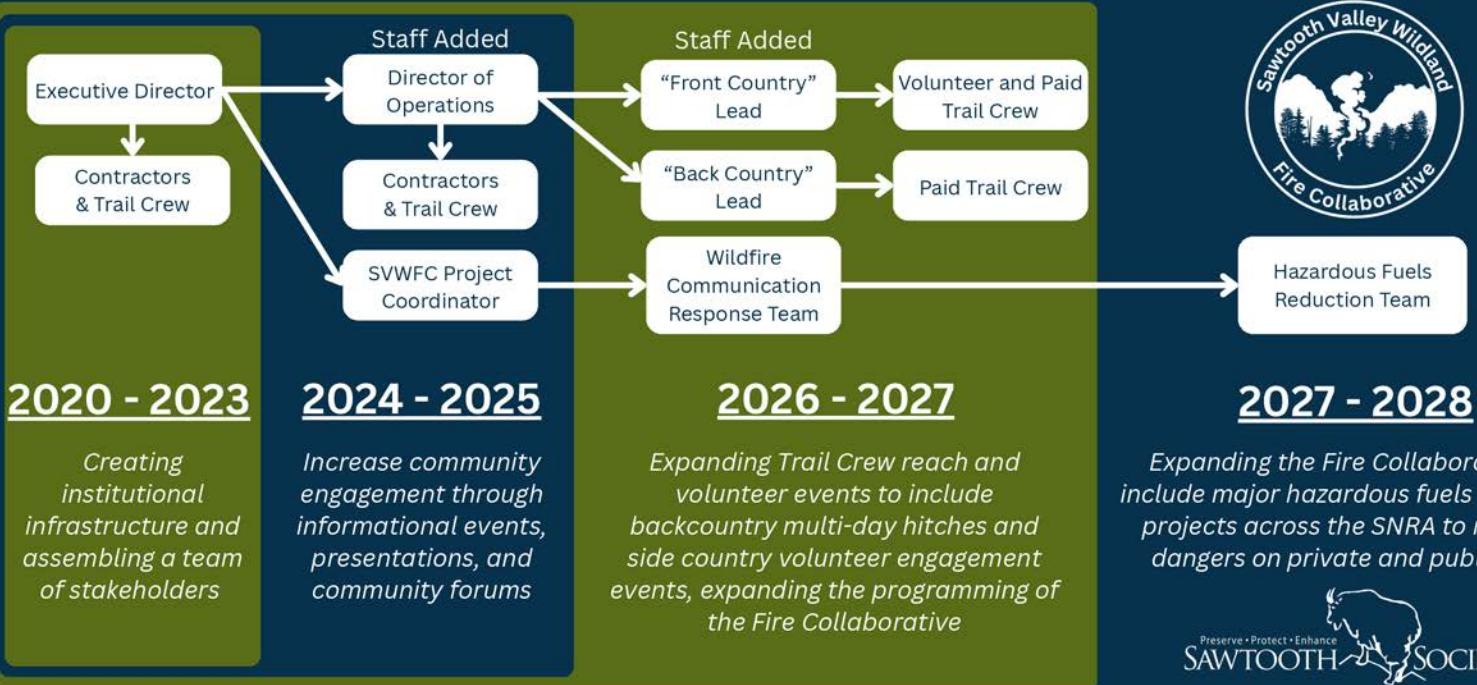
Hans Carstensen - Board Chair
Debra LaMorte - VC LPF Grants
Tom Benson - Treasurer
Ted Pardoe - Secretary
Jon Bauer
Connie Blair
Steve Botti
Monica Church

Harvey Dale
Carmen Duncan
Kelly Duncan
Doug Fenn
Jason Fry
Alex Klokke
Carter MacNichol
Chris "Mitch" Mitchell

Patsy Nickum
Doug Oblatz
Helen Pardoe
Pat Pettiette
Kuba Poraj-Kuczewski
Ann Viegel
Katrina Wright

SAWTOOTH SOCIETY - VISION FOR THE FUTURE 2020 - 2030

The Sawtooth Society is currently working on the next chapter of conservation in the west! In the upcoming years, we are launching a bold plan to expand our trail crew capabilities and reach. Additionally, we are seeking to mitigate the threat of wildfire through a multi-year project designed to reduce fire risk and create a more fire-resistant SNRA.



SAWTOOTH SOCIETY FINANCIALS

2025 REVENUE

ANNUAL FUND	\$190,000
FUNDRAISING EVENTS	\$170,000
GRANT INCOME	\$112,600
	\$472,600

2025 PROGRAM EXPENSES

FIRE COLLABORATIVE	\$148,000
TRAIL STEWARDSHIP	\$212,000
SNRA LICENSE PLATE	\$10,000
ADMIN SUPPORT	\$58,500
	\$428,500

In 2024, The Sawtooth Society staff and board committed to a bold plan to increase our presence in the Wood River Valley, the Sawtooth Valley, and the greater regional community.

*During this time of growth period, another full-time staff member, the Director of Operations, was hired to facilitate administrative support and marketing efforts, allowing for expanded programming and community outreach. Since implementing this plan, the Sawtooth Society has been able to **add 10 community workshops, lectures, and collaborative events** to our program offerings, as well as **expand the Fire Collaborative to provide detailed and time-sensitive critical fire updates to Sawtooth Valley Residents.***

MAXIMIZE YOUR IMPACT TODAY

Every giving level is a high-impact investment in the future of the SNRA

\$25

FILL A JERRY
CAN

*Keep the
chainsaws fueled
for a day on the
trail*

\$50

PER-DIEM FOR
BACKCOUNTRY

*Fund a trail crew
member's daily
per-diem for
backcountry
supplies*

\$100

BUY A NEW
PULASKI

*Halfway between
an axe and an
adze, it's the
workhorse of any
trail crew*

\$250

SHARPEN THE
CROSS-CUT

*80 cutting blades
that are hand
sharpened by a
specialty
bladesmith*

\$500

FUND A WEEK
OF SVWFC

*Fuel the work the
SVWFC does for
community
partnerships and
coordination*

\$1,000

TOTAL CREW
SHOE STIPEND

*Help the crew hike
a combined 800
miles maintaining
trails each summer*

\$5,000

BUY NEW
CHAINSAWS

*Get more "buck"
with your buck!
Commercial
chainsaws pack a
serious punch*

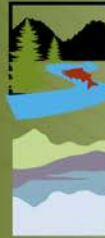
\$10,000

ADMINISTER THE
GOAT PLATE
PROGRAM

*Cover the entire
year's worth of
administrative
costs for the Goat
Plate program*

Partnerships

Special Thanks to the +100 organizations that we work closely with for Trail projects, SNRA Goat plate grants, the Sawtooth Valley Wildland Fire Collaborative, and local/regional collaboratives!



Sawtooth Coalition

IDAHO CONSERVATION LEAGUE



MAKE YOUR TAX DEDUCTIBLE CONTRIBUTION TODAY!

SCAN THE QR CODES,
OR MAIL A CHECK TO:

SAWTOOTH SOCIETY, INC
PO BOX 820
HAILEY, ID 83333

CONTACT US

KATHRYN GROHUSKY
EXECUTIVE DIRECTOR
KATHRYN@SAWTOOTHSOCIETY.ORG

MIKE HOOVER
DIRECTOR OF OPERATIONS
MIKE@SAWTOOTHSOCIETY.ORG

*Credit, debit, or
ACH Gifts*



Venmo



venmo

