

2026 SAGEBRUSH SOIREE

AUGUST 1, 2026 5:30PM - 8:30PM
HISTORIC REDFISH LAKE LODGE

SPONSOR THE SAGEBRUSH SOIREE

When you sponsor the Sagebrush Soiree, you and your organization provide a **high-impact investment in the future of the Sawtooths**, enabling The Sawtooth Society to:

PRESERVE recreational values and assets through trail work, collaboratives, community partnerships, and advocacy leadership

PROTECT the values of the Sawtooth National Recreation Area (SNRA) and its communities through projects like the Sawtooth Valley Wildland Fire Collaborative

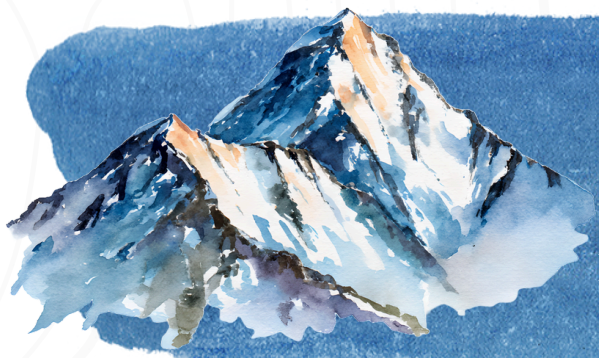
ENHANCE recreational facilities, in partnership with other organizations, by facilitating projects through the Sawtooth Society's "Goat Plate" Grants. This program has contributed over \$1.4 million in improvements to the SNRA over the past 25 years.

ABOUT THE SOIREE

For the past 20 years, The Sagebrush Soiree has been the primary fundraiser for the Sawtooth Society, providing necessary funding to support its ongoing projects.

The Soiree will take place on Saturday, August 1st, at the historic Redfish Lake Lodge, from 5:30pm - 8:30pm. With the dramatic backdrop of Redfish Lake and the Sawtooth Mountains, guests will enjoy hearty Hors d'oeuvres, beverages, and opportunities to bid on unique Live Auction Items that can only be experienced in the Sawtooth National Recreation Area, as well as a Paddle Raise where guests can raise their paddles to pledge their financial support of the Sawtooth Society.





2026 SAGEBRUSH SOIREE

AUGUST 1ST, 2026 5:30PM - 8:30PM
REDFISH LAKE LODGE EVENT TENT

SPONSORSHIP OPPORTUNITIES

Castle Peak \$15,000

The Highest Peak in the SNRA - Castle Peak - is where it all started. A mining project at the base threatened to destroy the pristine wilderness and serenity of the White Clouds Range, and Frank Church himself hiked out to survey the area and advocate for its protection. Its prominence of 4,035ft and elevation of 11,815ft make this granite giant dramatically extend above the surrounding mountains.

- Exclusive Listing as “Presenting Sponsor” in all print signage, press releases, and in-person event media
- Logo on street banner across Main Street in Hailey and Ketchum in July
- XL Logo and Website Link on Sawtooth Society and Sawtooth Valley Wildland Fire Collaborative Email Newsletters from June ‘26 - May ‘27
- XL Logo and Website Link on SawtoothSociety.org Sponsor Page for 2026
- Dedicated Thank You Social media post
- Six Tickets to the 2026 Sagebrush Soiree (Must be claimed by July 1st with Mike Hoover)
- Verbal Thank You from the stage during the event
- XL Logo on printed Sagebrush Soiree invitation
- Full Page Ad (5.5" x 8.5" advertisement) in printed program
- XL Logo on all table-tent centerpieces during the event
- XL Logo on Auction Slides during event
- XL Logo on post-event thank you email to all supporters
- Opportunity to provide branded items or promotional materials on tables to event attendees
- 2 Sawtooth Society Trail Crew Hats and Limited Edition Sawtooth Society Salmon Oak Charcuterie Board



Glassford Peak \$10,000

The Second-Highest peak in the SNRA at 11,602ft, Glassford is found deep within the Boulder Mountains and has a prominence of 1,762 ft. It divides the drainage between the East Fork of the Salmon River, flowing north, and the Big Wood River, flowing south.



- Large Logo and Website Link on Sawtooth Society and Sawtooth Valley Wildland Fire Collaborative Email Newsletters
- Large Logo and Website Link on SawtoothSociety.org Sponsor Page for 2026
- Dedicated Thank You Social media post
- Four Tickets to the 2026 Sagebrush Soiree (Must be claimed by July 1st with Mike Hoover)
- Verbal Thank You from the stage during the event
- Large Logo on Sagebrush Soiree Save-The-Date
- Large Logo on printed Sagebrush Soiree invitation
- Half Page Ad (5.5" x 4.25" advertisement) in printed program
- Large Logo on all table-tent centerpieces during the event
- Large Logo on Auction Slides during event
- Large Logo on post-event thank you email to all supporters
- 2 Sawtooth Society Trail Crew hats

Thompson Peak \$5,000

At 10,751ft, it is the tallest mountain in the Sawtooth Mountains, with the base sprawling westward to Boise County. Its prominence of 2,431ft is an imposing presence overlooking the City of Stanley.

- Medium Logo and Website Link on SawtoothSociety.org Sponsor Page for 2026
- Dedicated Thank You Social media post
- Two Tickets to the 2026 Sagebrush Soiree (Must be claimed by July 1st with Mike Hoover)
- Verbal Thank You from the stage during the event
- Medium Logo on printed Sagebrush Soiree invitation
- Quarter Page Ad (2.75"x4.25" advertisement) in printed program
- Medium Logo on all table-tent centerpieces during the event
- Medium Logo on Auction Slides during event
- Medium Logo on post-event thank you email to all supporters
- 2 Sawtooth Society Trail Crew hats



Mount Cramer \$2,500

Buried in the Sawtooth Wilderness, Mount Cramer is the second highest Peak in the Sawtooth Mountains at 10,716ft. At its base lies the Cramer Lakes, a popular destination for hikers traversing the Sawtooth Wilderness on multi-day backpacking trips.



- Small Logo and Website Link on SawtoothSociety.org Sponsor Page for 2026
- Dedicated Thank You Social media post
- Two Tickets to the 2026 Sagebrush Soiree (Must be claimed by July 1st with Mike Hoover)
- Verbal Thank You from the stage during the event
- Small Logo on printed Sagebrush Soiree invitation
- Logo in printed program
- Small Logo on all table-tent centerpieces during the event
- Small Logo on Auction Slides during event
- Small Logo on post-event thank you email to all supporters
- 2 Sawtooth Society Trail Crew hats

Mount Hayburn \$1,000

Located in the Sawtooth Mountains, Mount Hayburn iconically frames Redfish Lake at 10,229ft, only slightly eclipsed by the adjacent Thompson Peak. It is named after Idaho Senator Weldon Hayburn, who served from 1903 - 1912.

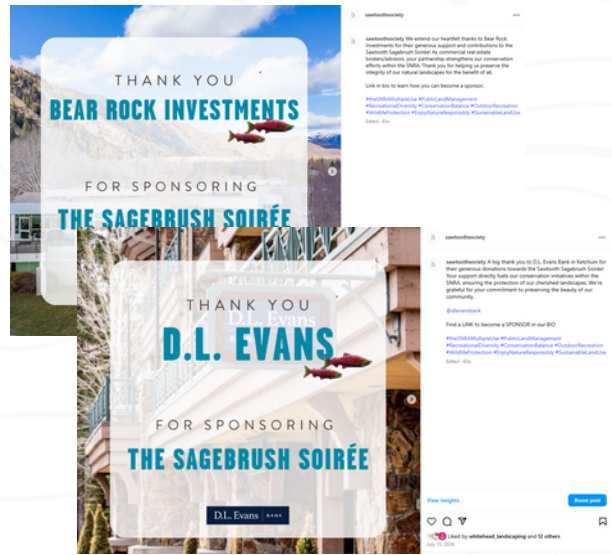
- One Ticket to the 2026 Sagebrush Soiree (Must be claimed by July 1st with Mike Hoover)
- Verbal Thank You from the stage during the event
- Typed Name or Logo on printed Sagebrush Soiree invitation
- Typed Name in printed program
- Typed name or Logo on all table-tent centerpieces during the event
- Typed Name or Logo on Auction Slides during event
- Typed Name or Logo on post-event thank you email
- 1 Sawtooth Society Trail Crew hat



EXAMPLES OF SPONSORSHIP MATERIAL



SAGEBRUSH SOIREE 2024 PROGRAM



SOCIAL MEDIA POSTS



SAGEBRUSH SOIREE 2025 AUCTION SLIDES

Have questions about sponsorships or don't see a sponsorship level that matches your budget? Contact Mike Hoover at Mike@SawtoothSociety.org to discuss other sponsorship opportunities and alternative ways to support The Sawtooth Society!

The Fine Print:

- Each claimed sponsor seat has a fair market value of \$100, which will be deducted from the total sponsorship acknowledgement
- In order to claim your sponsorship seats, you **MUST RSVP** to Mike Hoover by July 1st



	<u>Castle Peak</u>	<u>Glassford Peak</u>	<u>Thompson Peak</u>	<u>Mount Cramer</u>	<u>Mount Hayburn</u>
Sponsorship Amount	\$15,000	\$10,000	\$5,000	\$2,500	\$1,000
Presenting Sponsor Billing	Yes				
Logo on Street Banner (Across Main Street Hailey and Sun Valley Road in Ketchum in July)	Yes				
Logo and Website Link on Sawtooth Society and Sawtooth Valley Wildland Fire Collaborative email newsletter	XL Size	L Size			
Sawtooth Society SWAG	2 Trail Crew Hats, Sawtooth Society Charcuterie Board	2 Trail Crew Hats	2 Trail Crew Hats	2 Trail Crew Hats	1 Trail Crew Hat
Logo and website Link on Sawtoothsociety.org Sponsor Page for 2026 and Dedicated Social Media Thank You post	Yes	Yes	Yes	Yes	
Tickets to the Soiree August 1st, 2026 (Must RSVP to Mike Hoover by July 1st)	4	2	2	2	1
Thank You from Stage during event	Yes	Yes	Yes	Yes	Yes
Logo on Soiree Save the Date	XL Size	L Size	M Size	S Size	Typed Name
Logo on Soiree Print Invitation	XL Size	L Size	M Size	S Size	Typed Name
Ad Space in Printed Program	Full Page (5.5"x8.5")	Half Page (5.5"x4.25")	Quarter Page (2.75"x4.25")	Logo	Typed Name
Logo on all table-tent centerpieces during the event	XL Size	L Size	M Size	S Size	Typed Name
Logo on Auction Presentation Slides	XL Size	L Size	M Size	S Size	Typed Name
Logo in post-event thank you email	XL Size	L Size	M Size	S Size	Typed Name
Tax Deductible value if Tickets are Claimed (FMV of \$100 each)	\$14,600	\$9,800	\$4,800	\$2,300	\$900